



Monday, 7 October 2024

## **SEROWE ENERGY HUB: ENVIRONMENTAL APPROVAL**

### **Highlights:**

- a. Environmental approval granted to develop the Serowe Energy Hub which includes:**
  - i. LNG storage and distribution facilities.**
  - ii. 24MW solar/gas hybrid power plant (includes 4MW solar tender to supply the local grid).**
  - iii. Service and storage facilities.**
  - iv. Small market gardening area.**
- b. All environmental approvals are now in place for development of Botala's: Serowe gasfield; LNG production facilities; energy hubs in Serowe and Leupane; and pipeline from the gasfield to Leupane.**
- c. Development of the 4MW solar project which will be owned by Botala and various Botswana interests, including the Serowe community's Ngwato Development Trust, is expected to commence early next year.**

Botala Energy Ltd (ACN 626 751 620) (**Botala**) is pleased to advise that it has received approval from the Department of Environmental Protection to proceed with commercial development of its Serowe Energy Hub located centrally within the large village of Serowe and shown in Figure 1, near all necessary services.

Developments will need standard approvals and permits from local authorities.

**Kris Martinick, CEO of Botala said: "We are pleased to have secured environmental approval following a detailed social and environmental appraisal and look forward to working with local investors and the Serowe community-based Ngwato Development Trust, which are finalising funding arrangements.**

**We now have environmental approvals for all our proposed gasfield and related energy development plans, including commercial gas production, liquefaction and/or compression of gas, pipelines and establishing two strategically located Energy Hubs, each with substantial solar components and LNG production and distribution capacity. This will enable us to supply local demand and export electricity and especially LNG to South Africa and neighbouring countries. With the identified gas shortage in South Africa, we are focussed on expediting LNG production.**

**We remain well positioned to achieve our objectives in a sustainable and socially responsible manner."**

Botala's prime focus is development of its 100% owned Serowe coal bed methane gas project. The secondary focus is to develop solar energy and related opportunities, hence the development of the 110ha Serowe Energy Hub and 1520ha Leupane Energy Hub and Industrial Park adjacent to Palapye in Botswana.

Serowe, with a population of more than 50,000, is an important administrative and culturally significant village. Our proposed Energy Hub is centrally located within Serowe (see Figure 1) with good access to infrastructure and services, including connection to the local electricity grid.

Botala's Energy Hub at Leupane is larger than that at Serowe and includes staged development of a 500MW solar farm and 200MW gas hybrid plant. Stage-1 will be developed in joint venture with AAAS Energy BV of the Netherlands as announced to the ASX on 12 April 2024. A binding agreement requires AAAS to farm-into 50% of the Project for A\$1 million, with AAAS being responsible for all initial development capital. A Bankable Feasibility Study is expected to be completed by the end of 2024.

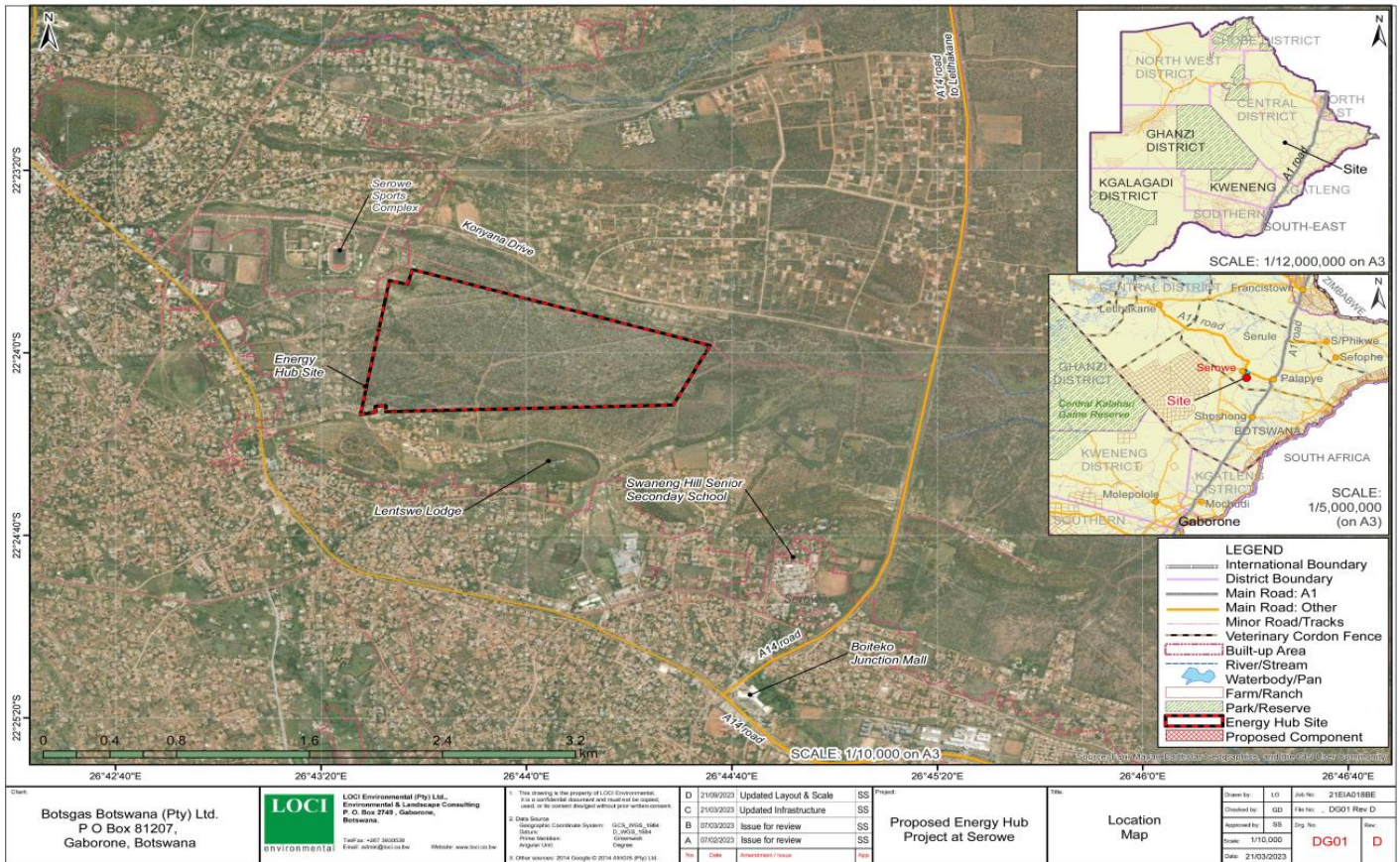


Figure 1 – Location of proposed Serowe Energy Hub.

This ASX announcement was approved and authorised for release by the CEO.

Yours faithfully  
**BOTALA ENERGY LTD**

Kris Martinick  
**Chief Executive Officer**

**For more information please contact:**

Kris Martinick on 0421 322 737; or email kris.martinick@botalaenergy.com.au

This report is lodged on Botala's website, [www.botalaenergy.com](http://www.botalaenergy.com)

## **About Botala**

Botala Energy Ltd (ACN 626 751 620) is an ASX-listed coal bed methane (**CBM**) exploration and development company focused on developing production from its 100% owned Serowe CBM Project located in a high-grade CBM region of Botswana and related early-stage renewable energy opportunities. Botala, as Operator, is focused on developing the Serowe CBM Project and believes that there is a considerable opportunity for it to commercialise the project due to the demand for stable power supply in Botswana and a demand for gas in Southern Africa

Botala is listed on the Australian Securities Exchange and the Botswana Stock Exchange.

## **Forward-looking Statements**

This document may contain certain statements that may be deemed forward-looking statements. Forward looking statements reflect Botala's views and assumptions with respect to future events as at the date of the Announcement and are subject to a variety of unpredictable risks, uncertainties, and other unknowns that could cause actual events or results to differ materially from those anticipated in the forward-looking statements. Actual and future results and trends could differ materially from those set forth due to various factors that could cause results to differ materially include but are not limited to: industry conditions, including fluctuations in commodity prices; governmental regulation of the gas industry, including environmental regulation; economic conditions in Botswana and globally; geological technical and drilling results; predicted production and reserves estimates; operational delays or an unanticipated operating event; physical, environmental and political risks; liabilities inherent in gas exploration, development and production operations; fiscal and regulatory developments; stock market volatility; industry competition; and availability of capital at favourable terms. Given these uncertainties, no one should place undue reliance on these forward-looking statements attributable to Botala, or any of its affiliates or persons acting on its behalf. Although every effort has been made to ensure this Announcement sets forth a fair and accurate view, we do not undertake any obligation to update or revise any forward-looking statements, whether because of new information, future events or otherwise.